

How Led Tape Lights Come?

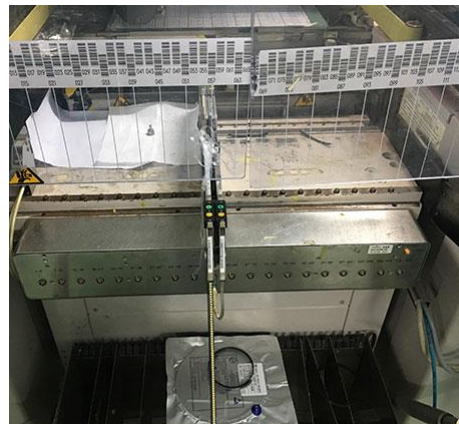
Quality strictly controlled under ISO9001:2000

How does a led tape light roll come? Let's see how it works in Copin Lighting Now:



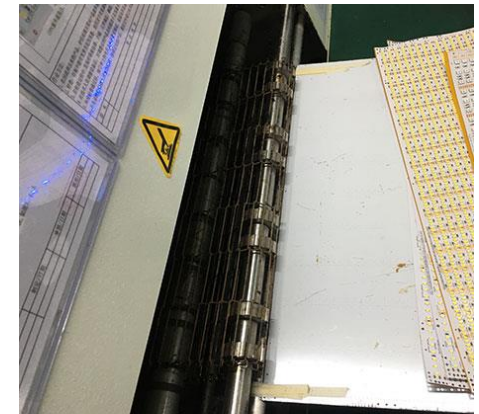
Step1. Soldering Paste

Soldering paste on PCB
automatically brushed
on grinding frame



Step2. SMT procesing

Led surface mounted on
PCB automatically



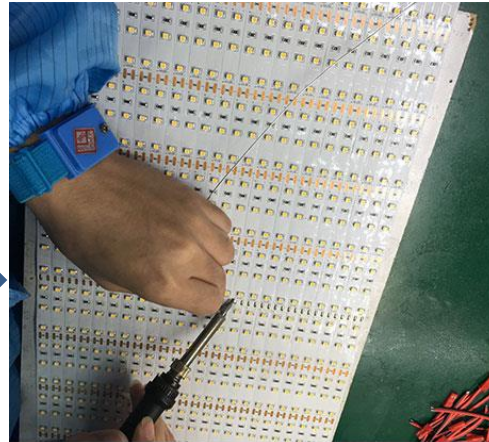
Step3. Reflow Soldering

reflowing soldering to
ensure components
fixed on PCB



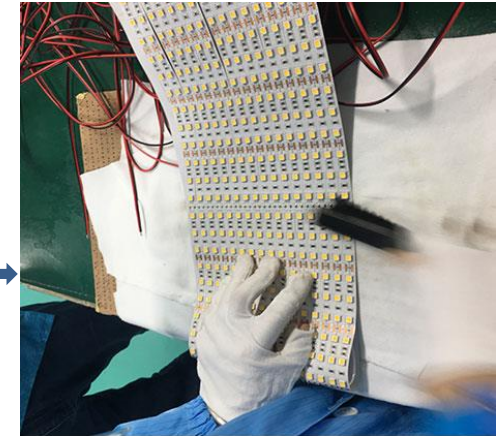
Step4. Classfying Semi-Finished Product

Semi-finished PCB classifying on shelves with specifications to avoid mistakes



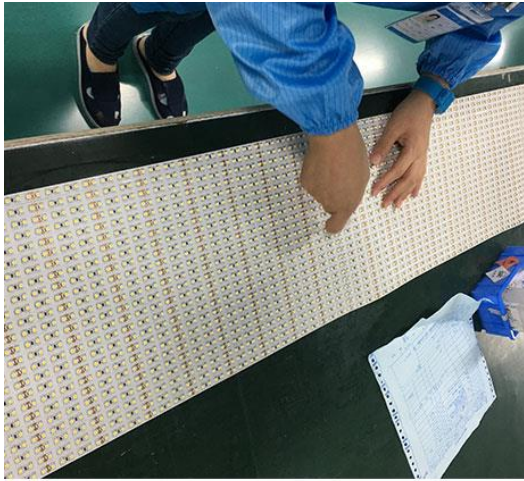
Step5. Bonding Wires

Bonding and soldering wires by hand, automatic bonding is available



Step6. Surface Cleaning

Cleaning the soldering residuals by brush



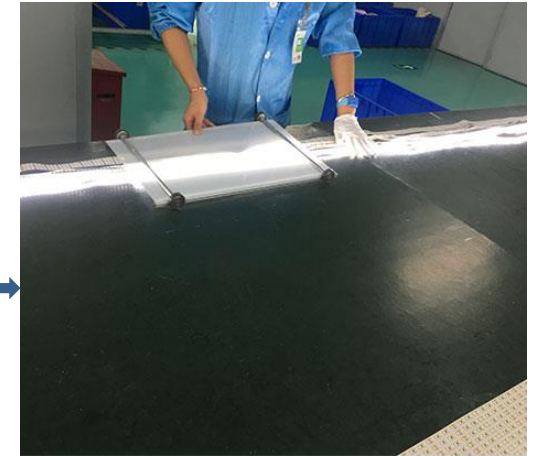
Step7. Outlook Checking

Semi-finished PCB
classifying on shelves
with specifications to
avoid mistakes



Step8. 3M adhesive Sticking

Bonding and soldering
wires by hand,
automatic bonding is
available



Step9. Function Inspecting

Inspecting and differing
the lighting even



Step 10. Aging Tests

Aging testing in special lab to ensure goods qualified enough



Step 11. Packing

Tape lights packed in spools



Step 12. Ready for Delivery

Goods ready for delivery

Most of the mass production process in Copin Lighting are made by hand, which enable to make OEM for clients, whether small trial orders or by volumes.
Should further details required, please send mails to : sales@copinled.com